

Lithium Battery System

217.6V-35KWH

CONTENTS

01

Introduction

02

Module Parameter

03

System Parameter

04

Electrical Principle

05

Product Application



◆ **Product Overview:** Based on lithium iron phosphate, the battery system has a modular design. Improved overall product safety and service life, with a reliable BMS system and high performance equalization technology. The whole system has the characteristics of flexible configuration and high reliability. The systems are widely used in distributed energy, solar energy storage, data room, subway, banking room, industrial energy storage and other fields.

◆ **Product Features:**

The chemistry is lithium iron phosphate (LFP), which is green and safe.

Modular design for easy installation and maintenance.

Higher Energy Density which means small size and lighter weight. 1/3 in weight and volume compared with traditional lead acid systems.

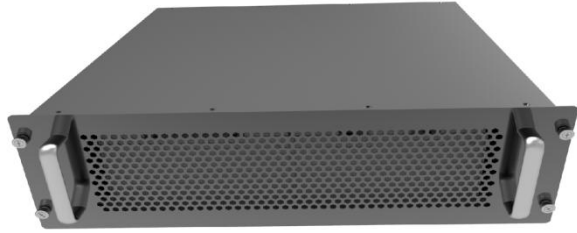
Flexible configuration allows different capacities according to customer needs.

Optional WIFI\GPS\GPRS can be added for remote energy monitoring and management. A three years warranty and a service life of more than 10 years.



Voltage platform	Battery capacity	Remarks
217.6V series	160Ah	
480V series	206Ah	

Module parameter



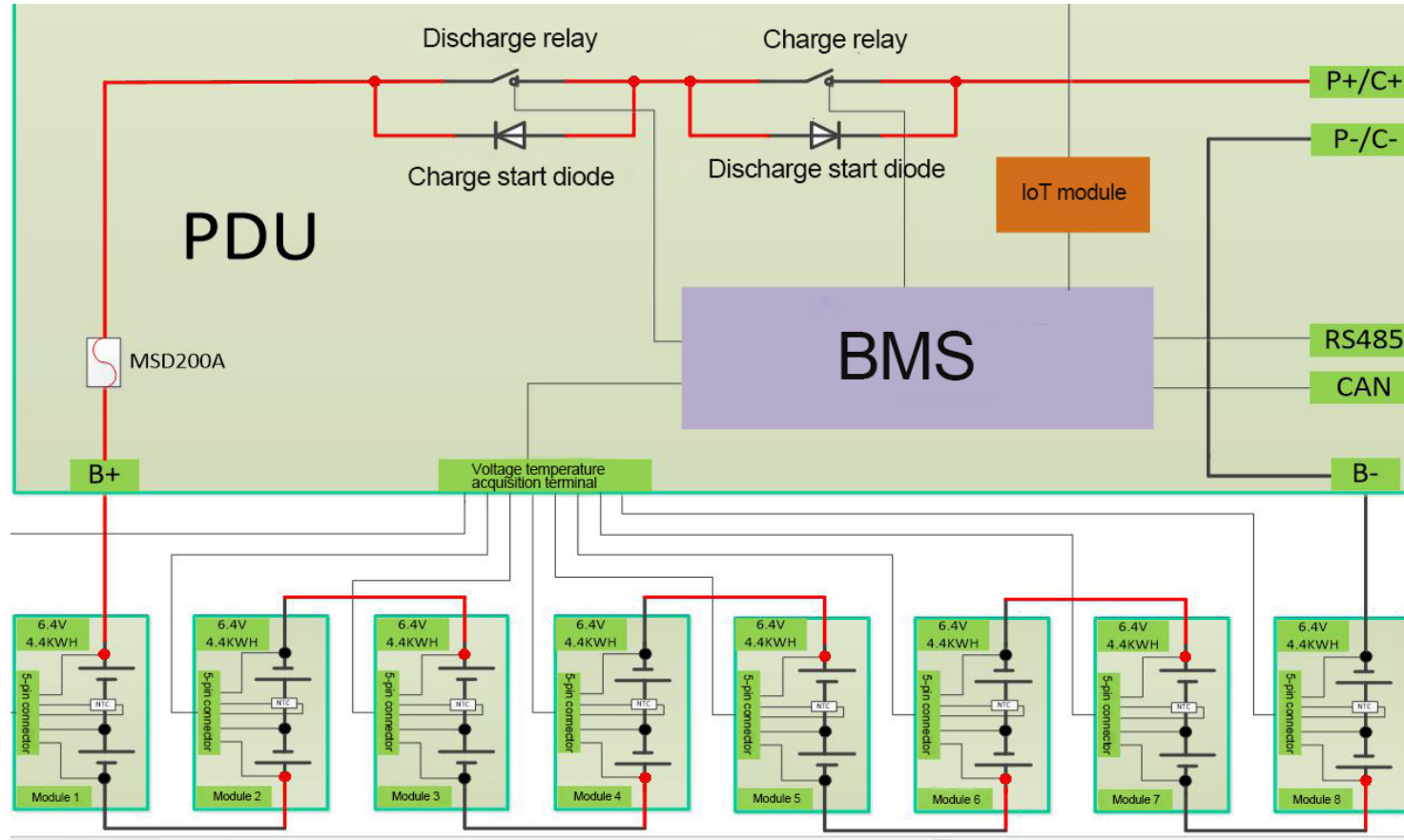
No.	Item name	Basic parameter
1	Rated capacity	160AH
2	Rated voltage	25.6V
3	Rated energy	4KWH
4	Standard charge	CC-CV mode, charge voltage 29.2V
		Current 0.3C
		End current 0.05C
5	Standard discharge	CC mode
		Rated current 0.5C
		Max. current 1C
		End voltage 20.8V
6	Max. discharge power	5KW
7	Weight	26.4KG
8	Temp. range	-10-50°C
9	Dimensions	W454*L582*H158.5

System parameter

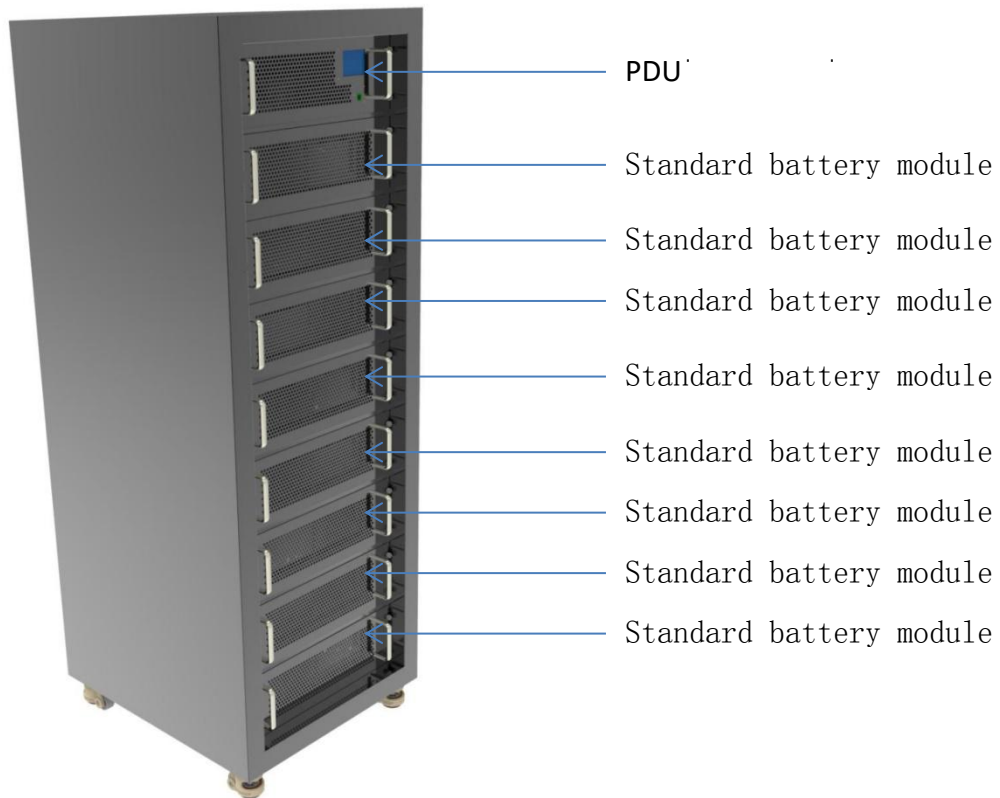


No.	Item name	Basic parameter
1	Rated capacity	160AH
2	Rated voltage	217.6V(68S), 176.8~248.2V
3	Charge voltage	248. 2V
4	Rated energy	35KWH
5	Standard charge	CC-CV mode
		Current 0.3C
		End current 0.05C
6	Standard discharge	CC mode
		Rated current 0.5C
		Max. current 1C
		End voltage 20.8V
7	Max. discharge power	40KW
8	Weight	300KG
9	Temp. range	-5℃~50℃
10	Communication	485/CAN
11	Dimensions	W602*L678*H1750

Electrical principle



Products application





ADVANCED Power & Lighting Systems

ADVANCED POWER & LIGHTING SYSTEMS

Commercial and Industrial LED Lighting and Energy Storage Systems

PLEASANT GROVE, UTAH (385) 259-4754

www.advancedplsystems.com

jcruz@advancedplsystems.com